

Test Report

No.: CANEC26005773003

Date: Mar 23, 2026

Page 1 of 7

Client Name: FOSHAN BLUE ROCKET ELECTRONICS CO.,LTD.

Client Address: NO.45 GUXIN ROAD,CHANCHENG DISTRICT,FOSHAN,GUANGDONG,P.R.C.

Sample Name: SOT-23 Semiconductor Device

Model No.: SOT-23

Client Ref. Information: SOT23-3, SOT23-5, SOT23-6, SOT-89, SOT-323, SOT-223, SOT-363, DFN1x1, DFN1.6x1.2, DFN2x2, DFN3x3, DFN3x2, DFN8x8, DFN5x6, DFN9x6, PDFN3X3, PDFN3X2, DFN1006, DFN0603, QFN3x3, QFN4x4, QFN2x2, SOD-123, SOD-323, SOD-523, SOP-7, SOP-8, ESOP-8, HTSSOP16, TS-2, TSOT23-6, TO-251, TO-252

The above sample(s) and information were provided by the client.

SGS Job No.: GZP26-006677

Sample Receiving Date: Mar 16, 2026

Testing Period: Mar 16, 2026 ~ Mar 20, 2026

Test Requested: Select test(s) as requested by the client.

Test Method(s): Please refer to next page(s).

Test Result(s): Please refer to next page(s).

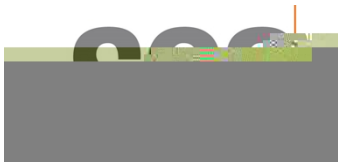
Test Requirement	Conclusion
EU RoHS Directive (EU) 2015/863 amending Annex II to Directive 2011/65/EU - Lead, Mercury, Cadmium, Hexavalent chromium, Polybrominated biphenyls (PBB), Polybrominated diphenyl ethers (PBDE), Bis(2-ethylhexyl) phthalate (DEHP), Butyl benzyl phthalate (BBP), Dibutyl phthalate (DBP) and Diisobutyl phthalate (DIBP)	Pass

Signed for and on behalf of
SGS-CSTC Standards Technical Services Co., Ltd. Guangzhou Branch

Zm Guan
Approved Signatory

Scan to see the report





Test Report

No.: CANEC26005773003

Date: Mar 23, 2026

Page 2 of 7

Test Result(s):

Test Part Description

SN ID	Sample No.	SGS Sample ID	Description
SN1	A1	CAN26-0057730-0001.C001	" SOT-23 Semiconductor Device "

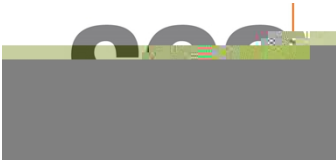
Remarks:

- (1) 1 mg/kg = 1 ppm = 0.0001%
- (2) MDL = Method Detection Limit
- (3) ND = Not Detected (< MDL)
- (4) "-" = Not Regulated

EU RoHS Directive (EU) 2015/863 amending Annex II to Directive 2011/65/EU - Lead, Mercury, Cadmium, Hexavalent chromium, Polybrominated biphenyls (PBB), Polybrominated diphenyl ethers (PBDE), Bis(2-ethylhexyl) phthalate (DEHP), Butyl benzyl phthalate (BBP), Dibutyl phthalate (DBP) and Diisobutyl phthalate (DIBP)

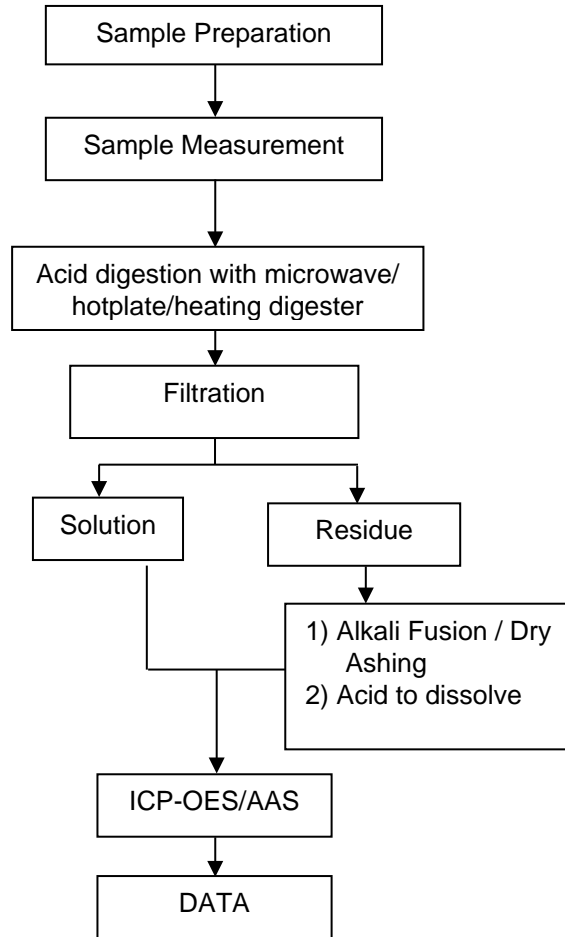
Test Method: With reference to IEC 62321-4:2013+AMD1:2017, IEC 62321-5:2013, IEC 62321-7-2:2017 and IEC 62321-12:2023, analysis was performed by ICP-OES/AAS, UV-Vis and GC-MS.

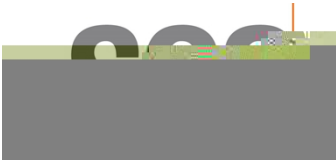
Test Item(s)	Limit	Unit(s)	MDL	A1
Lead (Pb)	1000	mg/kg	2	ND
Mercury (Hg)	1000	mg/kg	2	ND
Cadmium (Cd)	100	mg/kg	2	ND
Hexavalent Chromium (Cr(VI))	1000	mg/kg	8	ND
Polybrominated biphenyls (PBB)	1000	mg/kg	-	ND
Monobrominated biphenyl (MonoBB)	-	mg/kg	25	ND
Dibrominated biphenyl (DiBB)	-	mg/kg	25	ND
Tribrominated biphenyl (TriBB)	-	mg/kg	25	ND
Tetrabrominated biphenyl (TetraBB)	-	mg/kg	25	ND
Pentabrominated biphenyl (PentaBB)	-	mg/kg	25	ND
Hexabrominated biphenyl (HexaBB)	-	mg/kg	25	ND
Heptabrominated biphenyl (HeptaBB)	-	mg/kg	25	ND
Octabrominated biphenyl (OctaBB)	-	mg/kg	25	ND
Nonabrominated biphenyl (NonaBB)	-	mg/kg	25	ND
Decabrominated biphenyl (DecaBB)	-	mg/kg	25	ND
Polybrominated diphenyl ethers (PBDE)	1000	mg/kg	-	ND
Monobrominated diphenyl ether (MonoBDE)	-	mg/kg	25	ND
Dibrominated diphenyl ether (DiBDE)	-	mg/kg	25	ND
Tribrominated diphenyl ether (TriBDE)	-	mg/kg	25	ND
Tetrabrominated diphenyl ether (TetraBDE)	-	mg/kg	25	ND
Pentabrominated diphenyl ether (PentaBDE)	-	mg/kg	25	ND
Hexabrominated diphenyl ether (HexaBDE)	-	mg/kg	25	ND
Heptabrominated diphenyl ether (HeptaBDE)	-	mg/kg	25	ND



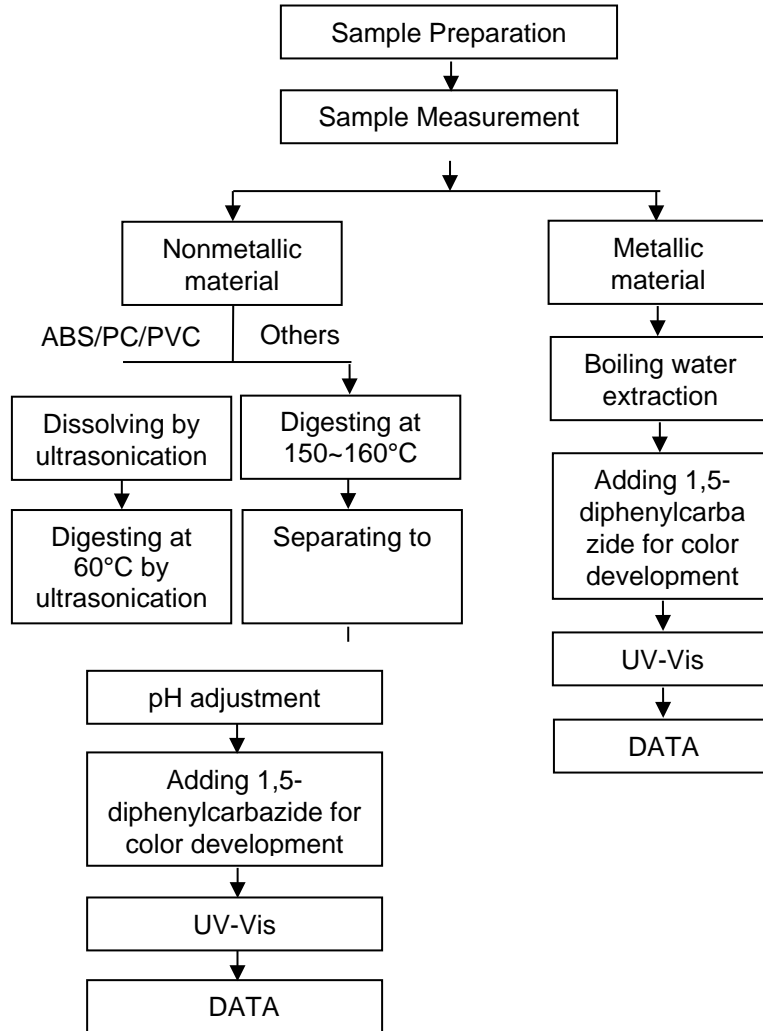
Elements Testing Flow Chart

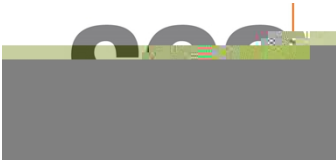
These samples of Pb/Cd/Hg were dissolved totally by pre-conditioning method according to below flow chart.



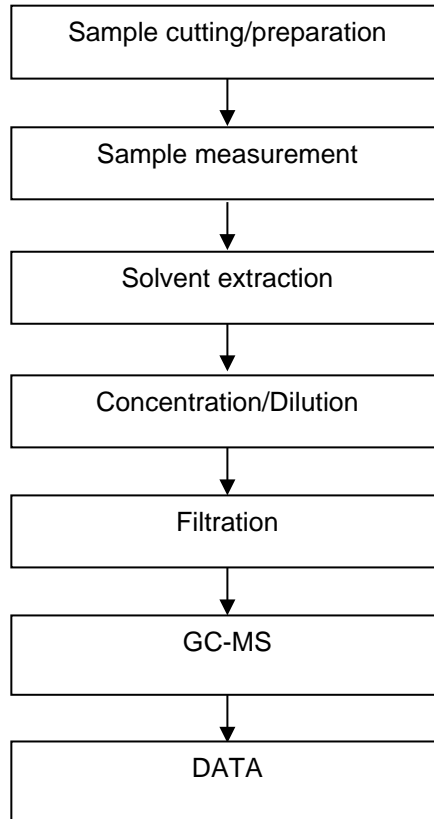


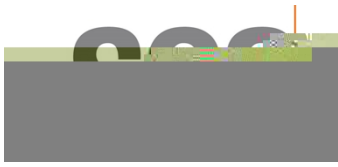
Hexavalent Chromium (Cr(VI)) Testing Flow Chart





PBB(s)/PBDE(s)/Phthalates Testing Flow Chart





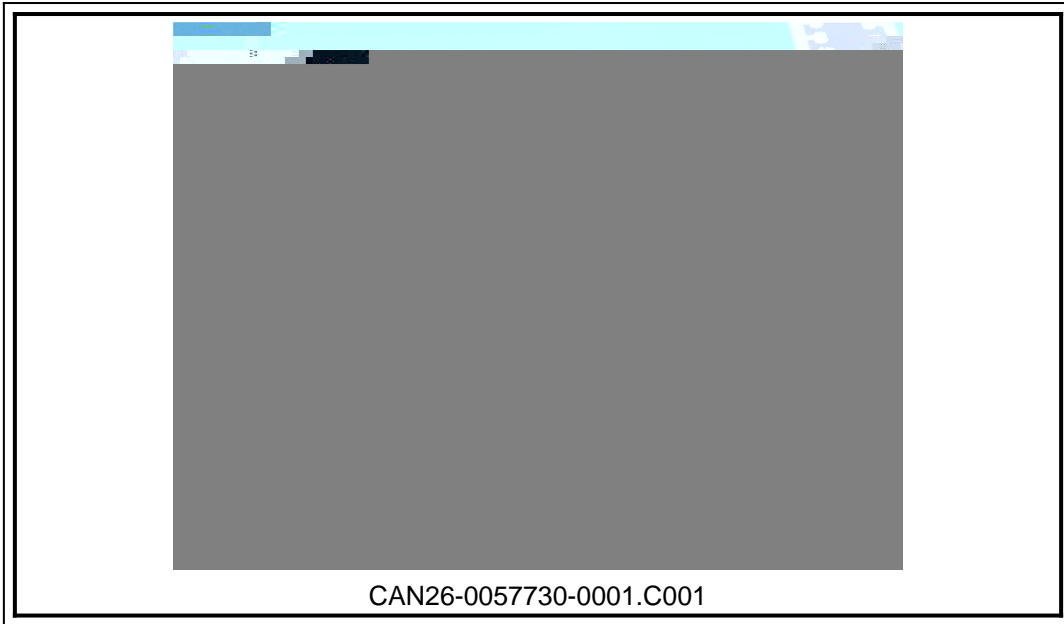
Test Report

No.: CANEC26005773003

Date: Mar 23, 2026

Page 7 of 7

Sample Photo:



SGS authenticate the photo on original report only
*** End of Report ***